



During the summer months at Spruce Lake campus, Camp Morty offers a quality outdoor residential camp experience for children residing in underserved communities in Westchester County. The camp's aim is to empower campers to become environmental stewards with a drive to learn, explore, and enjoy the outdoors.

CAMP MORTY

Smaller groups looking to host special outdoor programs or activities may acquire a special use permit for their organization or scout troop. Availability varies seasonally. To inquire, call (914) 864-7312. Insurance requirements may apply.

PROGRAMS

- Sleeping capacity is limited to eight people per shelter with the exception of the two double lean-to sites that accommodate up to 16 people.
- Camping permits are required through the park office. Occupants of shelters and tent sites will be held responsible for any damage to shelters/tent sites.
- Damage to trees prohibited. Only kiln-dried firewood may be brought into the park. Firewood also available for purchase through the park office.
- Alcohol is prohibited.
- There are no accommodations for RV camping.

Reservations are required and can be made by calling the park office at (914) 864-7312 or in person at the park office. Permit holder must be over 21 and must accompany each group. License and payment is required at time of reservation.

Year-round camping is available in open-face lean-tos. Each shelter has an outside grill for cooking, a designated fire ring for campfires, a picnic table and portable toilets.

CAMPING

CAMPING RATES (payable at registration)
Overnight rental use of Lean-to sites from 1 p.m. check-in to 11 a.m. check-out.

Single Lean-to Sites Rates (max capacity: 8 people)
\$35 (with Park Pass) **\$45** (without Park Pass)

Double Lean-to Sites Rates (max capacity: 16 people)
\$70 (with Park Pass) **\$90** (without Park Pass)

Firewood: \$15 (per bundle)

CAMPING RESERVATIONS

Campers who wish to make advance reservations may call the Mt. Lakes park office at (914) 864-7312. Permits are not transferable and fees are non-refundable.



PARK RULES AND REGULATIONS

- Park closes at dusk except to registered permit holders.
- Alcohol is prohibited.
- All animals, plants and minerals are protected and are not to be removed.
- Dogs must be leashed and in owner's control at all times.
- Dogs must be picked up after.
- Bicycles and motorized vehicles prohibited on trails.
- A carry in/out policy is in effect for litter and garbage.
- No hunting or trapping.
- Fires allowed in designated areas only.
- Only kiln-dried firewood may be brought into park.
- All must observe rules should a Red Flag Warning be issued related to fires.
- Fishing permitted in designated areas; New York State fishing license required.
- Swimming prohibited.
- Rock climbing prohibited.
- Possession of firearms, air-powered weapons, bows, arrows, slingshots, etc. is prohibited.

Updated 4/26



For more details, availability and rates, please call (914) 864-7312 or scan the QR code below to access the wedding webpage and brochure.

To make the most of the park's features, the wedding package includes: exclusive use of the Spruce Lake Campus for outdoor ceremony, cocktail hour, reception, and post-reception campfire, as well as the use of the Yurt Village for overnight accommodations – an experience your group will always remember.

The spacious dining hall overlooking Spruce Lake is available for special events and weddings of up to 150 guests. The commercial kitchen is available for use by a licensed caterer for eligible booked events. Weddings are booked for full weekends or longer.

EVENTS



Mountain Lakes Park offers the total outdoor experience for visitors including camping, fishing, hiking, snow-shoeing and nature exploration.

ACTIVITIES

AMENITIES

- Possession of fireworks prohibited by New York State law.
- Please adhere to posted Smoke-Free Zone regulations.
- Fuel-powered model vehicles prohibited.
- No RV/Trailers allowed.
- Two-week rental limit.
- Observe "Quiet Hours" from 10 p.m. to 8 a.m.
- Professional and commercial photography or any photography using supplemental lighting, tripods or other equipment requires a permit. Contact the permit office at (914) 231-4575.

PARK NOTES

The park is open year-round from dawn to dusk except for permit holders and campers occupying shelters overnight. The park entrance is located off Hawley Road in North Salem, New York. Westchester County Park Passes may be purchased and used by residents only. Times and fees are subject to change.

ASSISTANCE or EMERGENCY

For assistance during business hours, call: (914) 864-7312; after hours, contact the park ranger: (914) 760-6308, or the County Police: (914) 864-7700. In an emergency, call 911.



Download the New Parks App!

Westchester County Parks Pass

parks.westchestercountyny.gov • (914) 864-PARK



LOCATION MAP

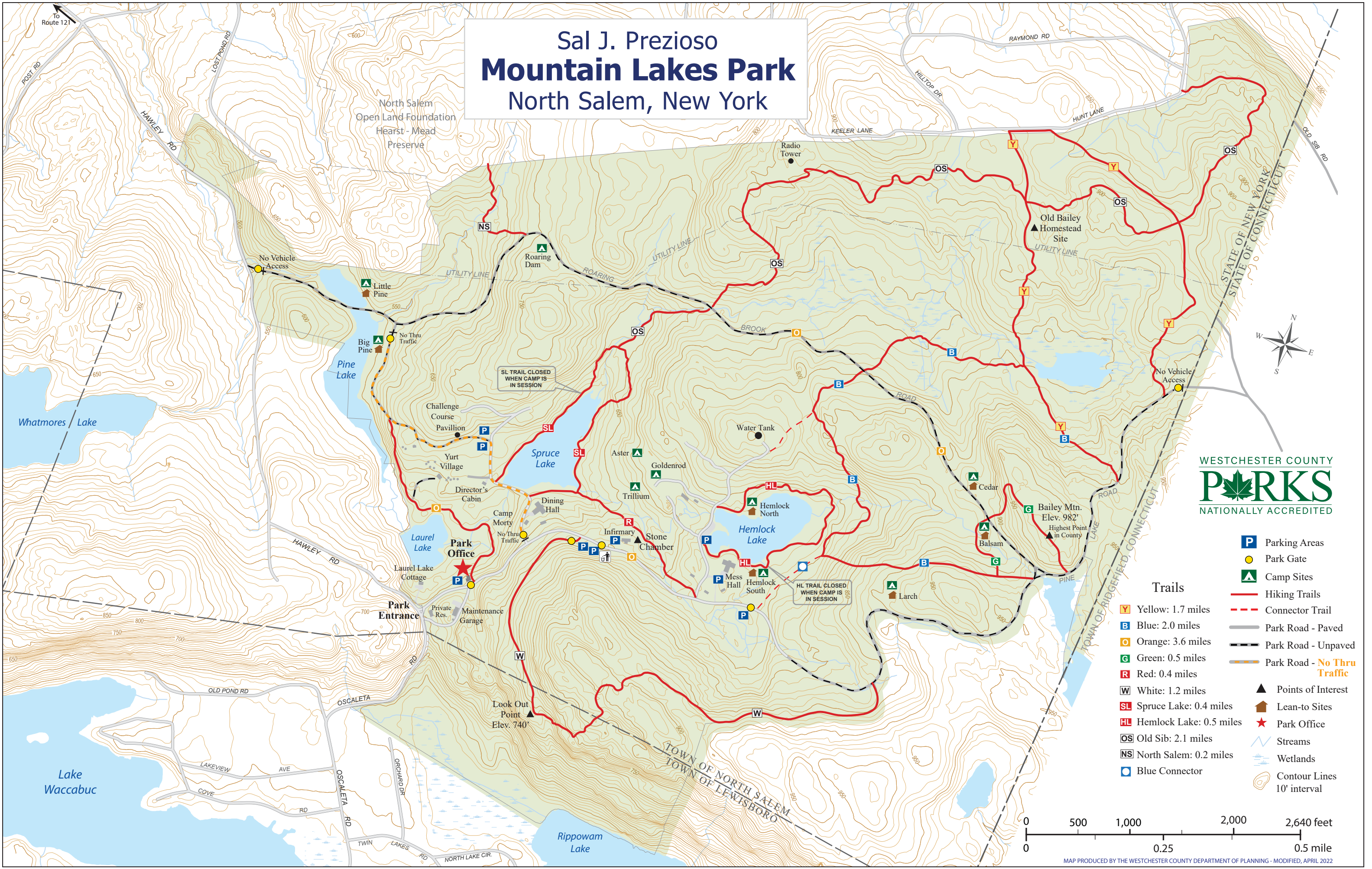
The 1,082-acre park is Westchester's northern-most county park. Acquired by the county in 1961, it is characterized by a rugged landscape, and native hardwood forests, rock outcroppings, meandering streams, beautiful views, the highest mountain in Westchester County and quiet trails. Aptly named, the park boasts five lakes and a spectacular overlook which creates the ultimate breath-taking hiking destination.

Sal J. Prezioso Mountain Lakes Park
201 Hawley Road
North Salem, NY 10560
Park Office: (914) 864-7312
Hours: open daily, 9 a.m. to 4 p.m.



Sal J. Prezioso Mountain Lakes Park

North Salem, New York



- Trails**
- Yellow: 1.7 miles
 - Blue: 2.0 miles
 - Orange: 3.6 miles
 - Green: 0.5 miles
 - Red: 0.4 miles
 - White: 1.2 miles
 - SL Spruce Lake: 0.4 miles
 - HL Hemlock Lake: 0.5 miles
 - OS Old Sib: 2.1 miles
 - NS North Salem: 0.2 miles
 - Blue Connector
- P Parking Areas
 - Park Gate
 - ▲ Camp Sites
 - Hiking Trails
 - - - Connector Trail
 - Park Road - Paved
 - - - Park Road - Unpaved
 - - - Park Road - No Thru Traffic
 - ▲ Points of Interest
 - Lean-to Sites
 - ★ Park Office
 - ~ Streams
 - ~ Wetlands
 - Contour Lines 10' interval

