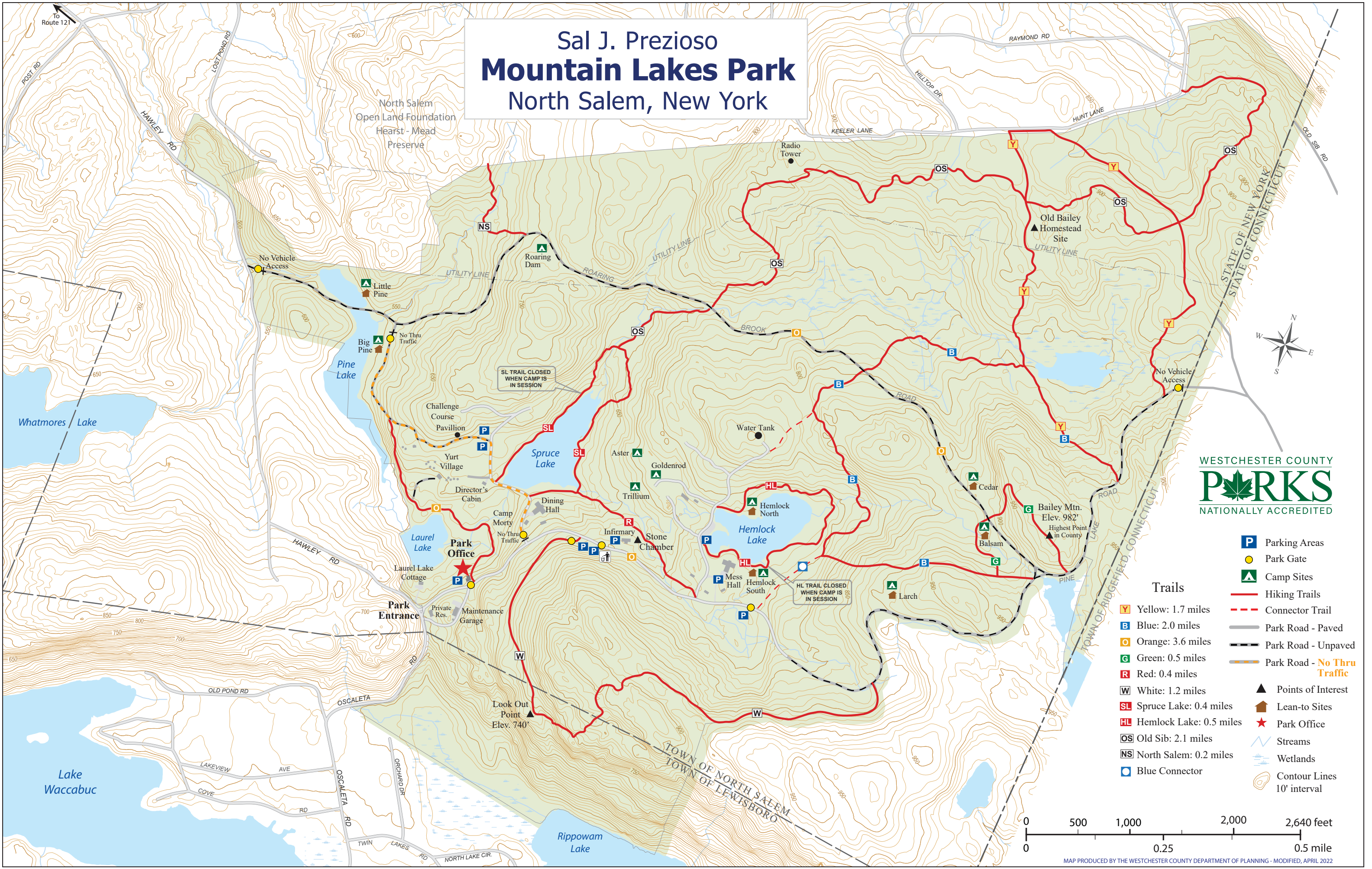


# Sal J. Prezioso Mountain Lakes Park

## North Salem, New York



- P** Parking Areas
- Park Gate
- ▲** Camp Sites
- Hiking Trails
- - -** Connector Trail
- Park Road - Paved
- - -** Park Road - Unpaved
- - -** Park Road - **No Thru Traffic**
- ▲** Points of Interest
- Lean-to Sites
- ★** Park Office
- Streams
- Wetlands
- Contour Lines 10' interval

### Trails

- Y** Yellow: 1.7 miles
- B** Blue: 2.0 miles
- O** Orange: 3.6 miles
- G** Green: 0.5 miles
- R** Red: 0.4 miles
- W** White: 1.2 miles
- SL** Spruce Lake: 0.4 miles
- HL** Hemlock Lake: 0.5 miles
- OS** Old Sib: 2.1 miles
- NS** North Salem: 0.2 miles
- BC** Blue Connector

