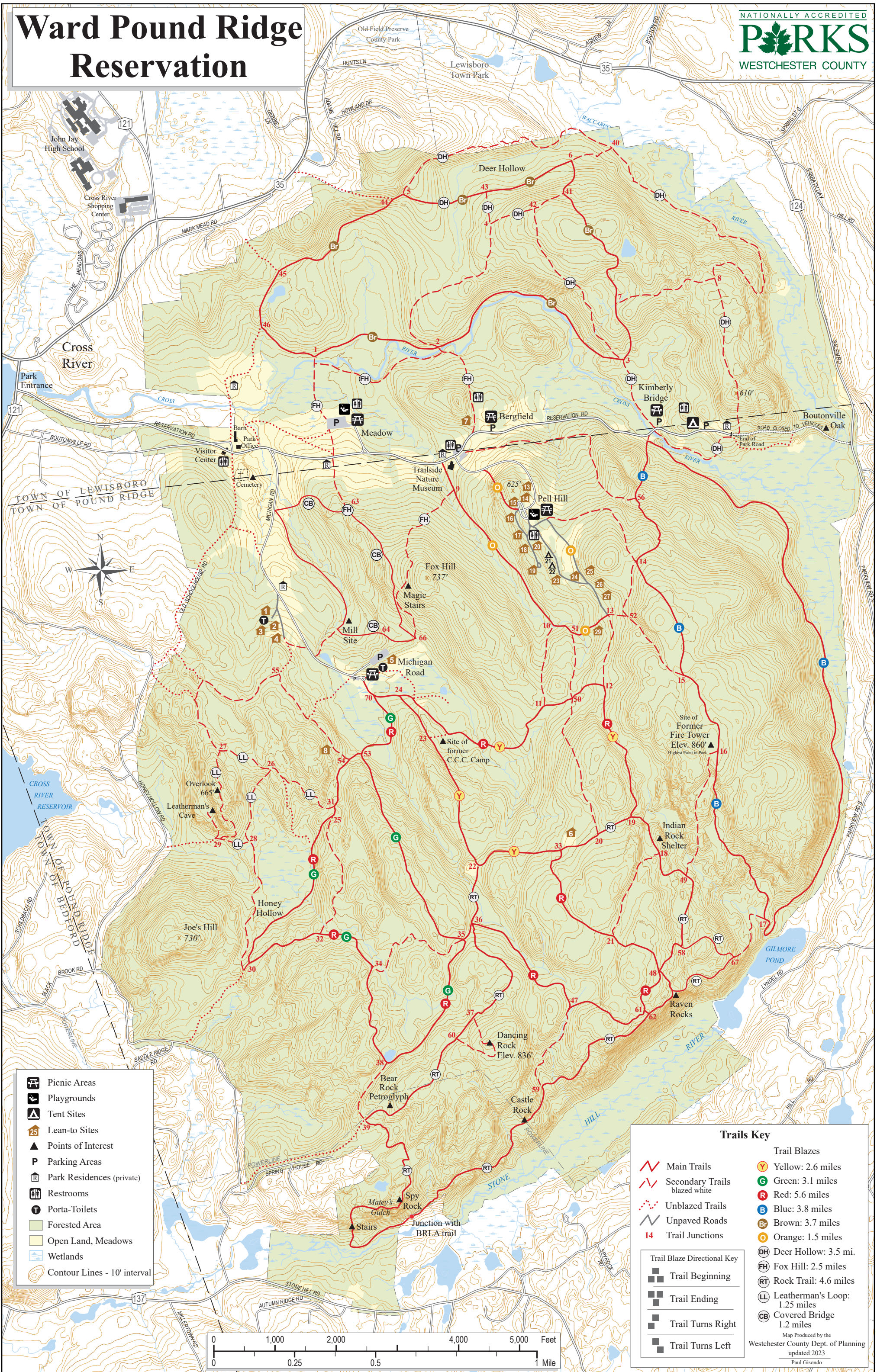


# Ward Pound Ridge Reservation



- Picnic Areas
- Playgrounds
- Tent Sites
- Lean-to Sites
- Points of Interest
- Parking Areas
- Park Residences (private)
- Restrooms
- Porta-Toilets
- Forested Area
- Open Land, Meadows
- Wetlands
- Contour Lines - 10' interval

### Trails Key

	Main Trails		Trail Blazes
	Secondary Trails blazed white		Yellow: 2.6 miles
	Unblazed Trails		Green: 3.1 miles
	Unpaved Roads		Red: 5.6 miles
	Trail Junctions		Blue: 3.8 miles
	Trail Beginning		Brown: 3.7 miles
	Trail Ending		Orange: 1.5 miles
	Trail Turns Right		Deer Hollow: 3.5 mi.
	Trail Turns Left		Fox Hill: 2.5 miles
			Rock Trail: 4.6 miles
			Leatherman's Loop: 1.25 miles
			Covered Bridge 1.2 miles

Map Produced by the  
 Westchester County Dept. of Planning  
 updated 2023  
 Paul Gisondo

