

# Ward Pound Ridge Reservation



Westchester County  
George Latimer  
Westchester County Executive

@westchestercountyparks

@westchesterpark

@westchesterparks

[parks.westchester.gov.com](http://parks.westchester.gov.com) • (914) 864-PARK



For more information, visit  
[parks.westchester.gov.com/park-passes](http://parks.westchester.gov.com/park-passes).

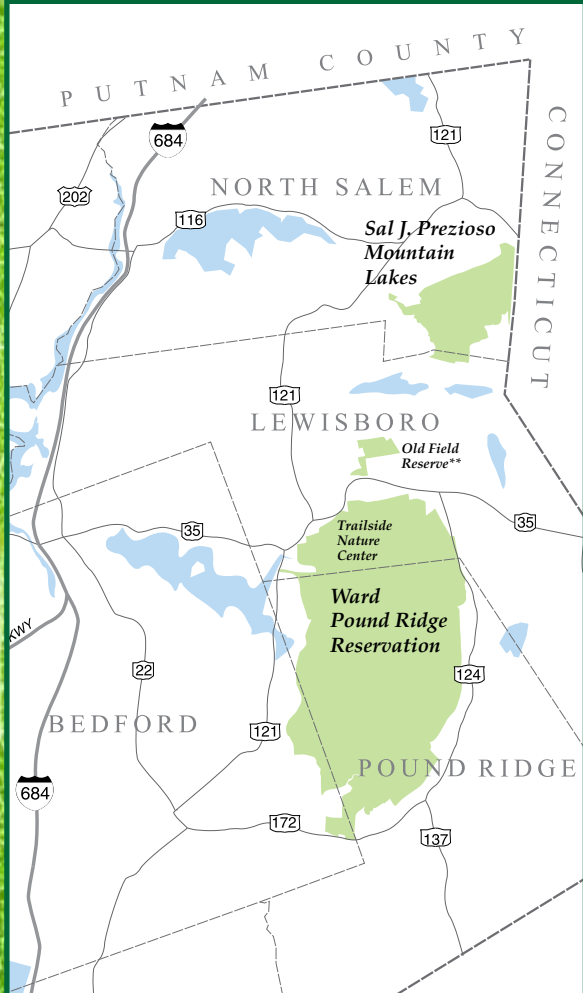


**VOLUNTEER OR SUPPORT**  
To help Friends of Trailside and Ward Pound Ridge Reservation visit [friendsoftrailside.org](http://friendsoftrailside.org).

**THE GALLERY IN THE PARK**  
The Gallery offers the ultimate leisurely art experience. Featuring three intimate shows per year, the Gallery highlights regional artists and groups in a wide variety of media. Changing installations of outdoor sculptures also dot the reservation's landscape. It's located in the Benedict homestead and current park office.  
**Hours:** Open daily, year-round from 9 a.m. to 5 p.m.



## LOCATION MAP



This more-than-4,000-acre reservation is Westchester County's largest and one of its most beautiful parks. Purchased by the county in 1925, it was set aside as a sanctuary for wildlife and as a recreational and educational area. It was designated a Biodiversity Reserve Area in 2001.

Ward Pound Ridge Reservation  
Box 461  
Reservation Road  
Cross River, NY 10518  
Park Office: (914) 864-7317  
Hours: open daily, 9 a.m. to 5 p.m.

## AMENITIES

### BIODIVERSITY

The park consists of many diverse habitats including meadows, hardwood forests, pine plantations, wet meadows, vernal pools and sandy moraines. These habitats host a variety of flora and fauna, from common to rare. Nearly 1,000 species of birds, butterflies, dragonflies, reptiles, amphibians and plants have been catalogued through ongoing biodiversity surveys. Due to its ecological value, the park is recognized as an Audubon Important Bird Area.

### HIKING TRAILS

The reservation features more than 35 miles of hiking trails through the various habitats. The many carriage road trails and stone walls meandering through the park are a testament to farming days gone by. The secondary trails are often less conspicuous and fun to explore. There are many points of interest worthy of a destination. Please remember to always bring a (topographical) map with you while hiking, like the map on other side of this brochure.

### PICNICKING

Picnic areas are equipped with charcoal grills or fireplaces and picnic tables. Groups of 26 or more people are required to make an advance reservation by calling (914) 231-4575.

### THE TRAILSIDE NATURE MUSEUM

The museum exhibits specimen birds, mammals, reptiles, insects, minerals and American Indian artifacts. It also houses the Delaware Indian Resource Center. Nature interpretive programs are offered weekly.

**Hours:** Open Tuesday-Thursday, Saturday and Sunday, 9 a.m. to 4 p.m. School and group visits are available by appointment. Call (914) 864-7322.



### CAMPING

Year-round camping is available in open-face lean-tos. Sleeping capacity is limited to eight people per shelter. Comfort stations are located nearby. Each shelter has a picnic table and an outside grill or fireplace for cooking. A maximum of two tents may be erected at each shelter.

In addition to the lean-tos, open tent sites are available on a first-come, first-served basis in the upper Kimberly Bridge area.

Two cars are permitted per shelter/site; additional visitors' cars pay applicable parking fee.

There are no accommodations for RV camping. Camping permits, available to adults age 21 and older, are required and are issued at the park office.

**Shelter Rates:** (payable at registration)

**Overnight use:** (11 a.m. to 11 a.m.)

**\$40** (with Park Pass)

**\$55** (without Park Pass)

**Tent Rates:** (payable at registration)

**Overnight use:** (11 a.m. to 11 a.m.)

**\$30** (with Park Pass)

**\$45** (without Park Pass)

Campers who wish to make advance reservations by mail must do so at least three weeks prior to their visit. Reservations can also be made in-person at the park office. Call (914) 864-7317 for details. Permits are not transferable and fees are nonrefundable.

Occupants of shelters and tent sites will be held responsible for any damage to shelters and facilities. Alcoholic beverages not allowed in shelters/tent sites.

### HORSEBACK RIDING

Main trails may be used for horseback riding. Horse trailers must park at the Meadow parking lot or behind shelter #5. (See map.) Horses may not be ridden on paved roads. No horses are available for hire.

**Fees:** (Per horse trailer and towing vehicle)

**\$15** (with Westchester County Park Pass)

**\$20** (without Park Pass)

- All animals, plants and minerals are protected and are not to be removed.
- Dogs must be picked up after and leashed at all times.
- Bicycles and motorized vehicles prohibited on trails.
- A carry-in/out policy is in effect for litter and garbage.
- No hunting or trapping.
- Fires allowed in designated areas only.
- Swimming prohibited.
- Rock climbing prohibited.
- Possession of firearms, air-powered weapons, bows, arrows, slingshots, etc. is prohibited.
- Fishing permitted only in the Cross River, New York State fishing license required.
- Possession of fireworks prohibited by NY State law.
- Please adhere to posted Smoke-Free Zone regulations.
- Fuel-powered model vehicles prohibited.

### PARK RULES

- The park is open year-round from dawn to dusk except for campers occupying shelters overnight.
- All fees are subject to change.
- Park entrance is near the junction of Routes 35 and 121 South in Cross River, exit 6 off I-684.

**\$50**

**\$20** Mini-bus (10-passenger maximum)

**Buses:**

Senior Park Pass.

**\$1\*** Weekdays only, with a Westchester County Senior Park Pass.

**Senior Citizens\*:**

**\$10** (without Park Pass)

**\$5** (with Park Pass)

**Passenger cars, motorcycles and vans:**

**PARKING AND ENTRANCE FEES:**

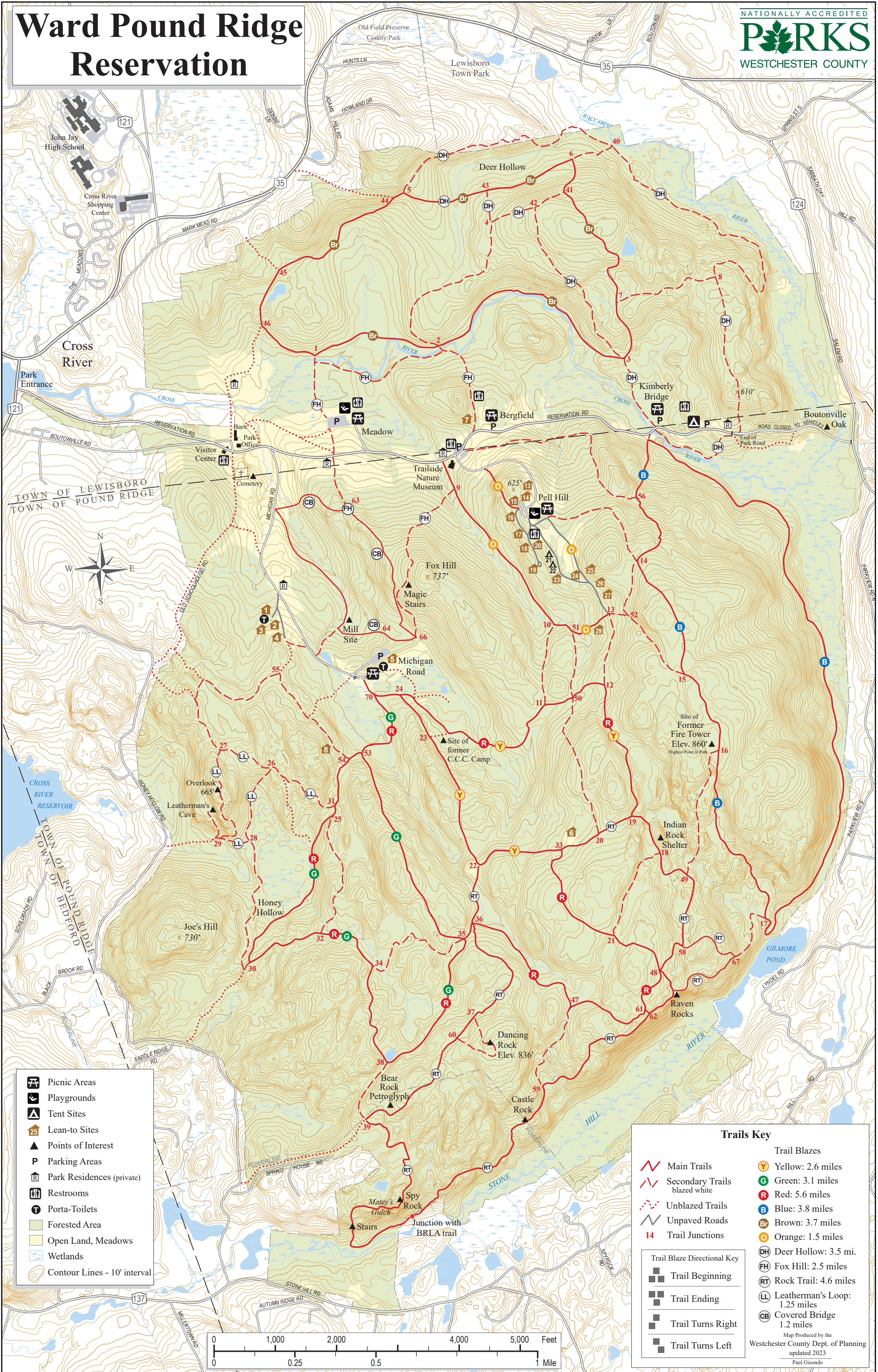
An extensive system of five-, three- and two-mile trails is available for cross-country skiing. Trails begin at the end of Michigan Road. Skiing is also permitted on open fields. Sledding is permitted on Fell Hill (see map on reverse side).

### WINTER ACTIVITIES

The 1/2-acre Luquer-Marble Memorial Wildflower Garden, located near the Trailside Nature Museum, contains over 100 kinds of wildflowers (see map). Children must be accompanied by an adult. Dogs are not allowed in the garden.

### WILDFLOWER GARDEN

# Ward Pound Ridge Reservation



- Picnic Areas
- Playgrounds
- Tent Sites
- Lean-to Sites
- Points of Interest
- Parking Areas
- Park Residences (private)
- Restrooms
- Porta-Toilets
- Forested Area
- Open Land, Meadows
- Wetlands
- Contour Lines - 10' interval

### Trails Key

	Main Trails		Trail Blazes
	Secondary Trails blazed white		Yellow: 2.6 miles
	Unblazed Trails		Green: 3.1 miles
	Unpaved Roads		Red: 5.6 miles
	Trail Junctions		Blue: 3.8 miles
	Trail Beginning		Brown: 3.7 miles
	Trail Ending		Orange: 1.5 miles
	Trail Turns Right		Deer Hollow: 3.5 mi.
	Trail Turns Left		Fox Hill: 2.5 miles
			Rock Trail: 4.6 miles
			Leatherman's Loop: 1.25 miles
			Covered Bridge 1.2 miles

Map Produced by the  
 Westchester County Dept. of Planning  
 updated 2023  
 Paul Gisondo

